



### Q-Lab Software Navigation

---

#### Overview

This Application Note will provide you with a general overview of how to navigate and control the Q-Lab Software.

#### Prerequisites

The following sections require that the prerequisites shown below have been completed before using the Q-Lab Software.

- The 8821Q-R is turned on and is connected with the appropriate network cable to the PC or Laptop Computer in which the Q-Lab Software is installed.
- The Q-Lab Software is open and a connection to the 8821Q-R has been established.
- The Q-Lab Software is remotely controlling the 8821Q-R and the Live Display Window is open as shown in the figure on the following page.



**NOTE:** If you have not met these prerequisites shown above, see the **Installing Q-Lab and 8821Q-R Initial Connection** Application Note.

For more detailed information than what is found in this document relating to specific details of individual controls, see the following Operation Manuals;

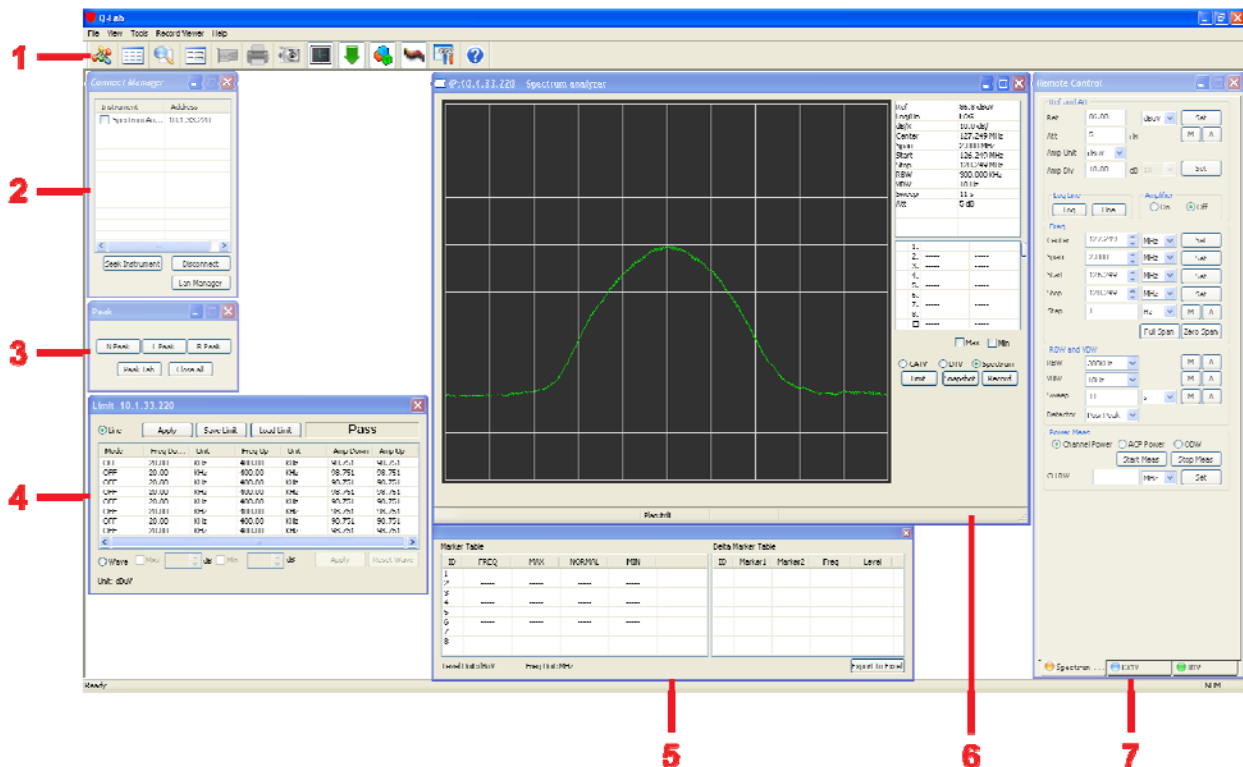
- 8821Q-R Operation Manual
- Q-Lab Software Operation Manual

For Additional Help Contact  
Trilithic Applications Engineering  
1-800-344-2412 or 317-895-3600  
[support@trilithic.com](mailto:support@trilithic.com) or  
[www.trilithic.com](http://www.trilithic.com)

Q-Lab Software Navigation  
P/N 0010275046 – Rev 9/08  
1 of 7

## Q-Lab Software Work Environment

The following figure represents a typical example of the Q-Lab Software work environment once you are remotely controlling the 8821Q-R.



- |                              |                          |
|------------------------------|--------------------------|
| 1. Toolbar                   | 5. Marker Table Window   |
| 2. Connect Manager Window    | 6. Live Display Window   |
| 3. Peak Marker Window        | 7. Remote Control Window |
| 4. Measurement Limits Window |                          |



**NOTE:** To view saved Live Display Snapshot or Kinescope files as well as DTV Statistic files you can select the **Record Viewer** Menu Option from the Main Menu above the Toolbar.

For Additional Help Contact  
 Trilithic Applications Engineering  
 1-800-344-2412 or 317-895-3600  
[support@trilithic.com](mailto:support@trilithic.com) or  
[www.trilithic.com](http://www.trilithic.com)

Q-Lab Software Navigation  
 P/N 0010275046 – Rev 9/08  
 2 of 7

## Toolbar

The toolbar is located at the top of the Q-Lab Software and includes the following buttons;



**Connect Instrument** – Used to modify network connectivity settings to remotely control up to thirty five 8821Q-Rs.



**Channel Test Plan** – Used to edit, transfer, and activate channel test plans.



**Show Picture** – Used to view stored bitmap images.



**Test Report Viewer** – Used to view test results and transfer results to a spreadsheet.



**Update Instrument** – Not Used



**Printer** – Used to print channel test plans or test results.



**BMP Snapshot** – Used to take bitmap snapshot of the current Live Display Window.



**Connect Manager** – Used to open and close the Connect Manager Window.



**Peak Marker** – Used to open and close the Peak Marker Window.



**Remote Control** – Used to open and close the Remote Control Window.



**Limit Settings** – Used to open and close the Measurement Limits Window.



**Options** – Used to open and close the Instrument Option Window.



**Help** – Used to view the current software version of the Q-Lab Software.

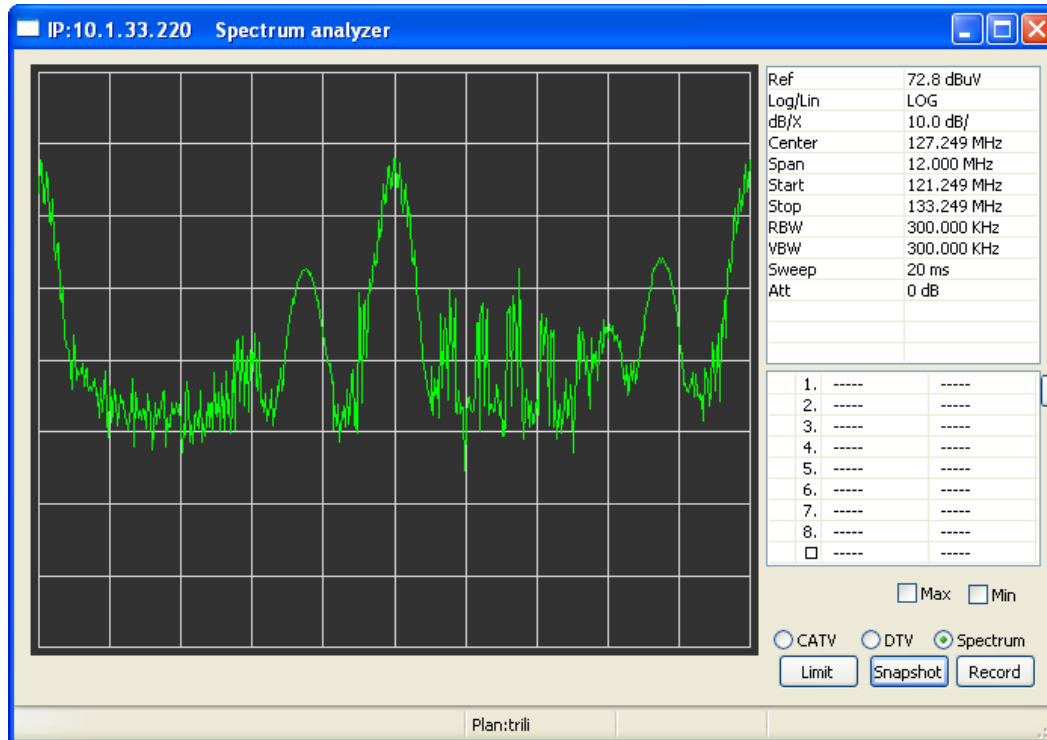
The Main Menu allows you to select the same options as the Toolbar.

For Additional Help Contact  
Trilithic Applications Engineering  
1-800-344-2412 or 317-895-3600  
[support@trilithic.com](mailto:support@trilithic.com) or  
[www.trilithic.com](http://www.trilithic.com)

Q-Lab Software Navigation  
P/N 0010275046 – Rev 9/08  
3 of 7

## Live Display Window

The Live Display Window is used to view the live 8821Q-R analyzer display when in the remote control mode as shown in the following figure;



This window also allows you to perform the following functions;

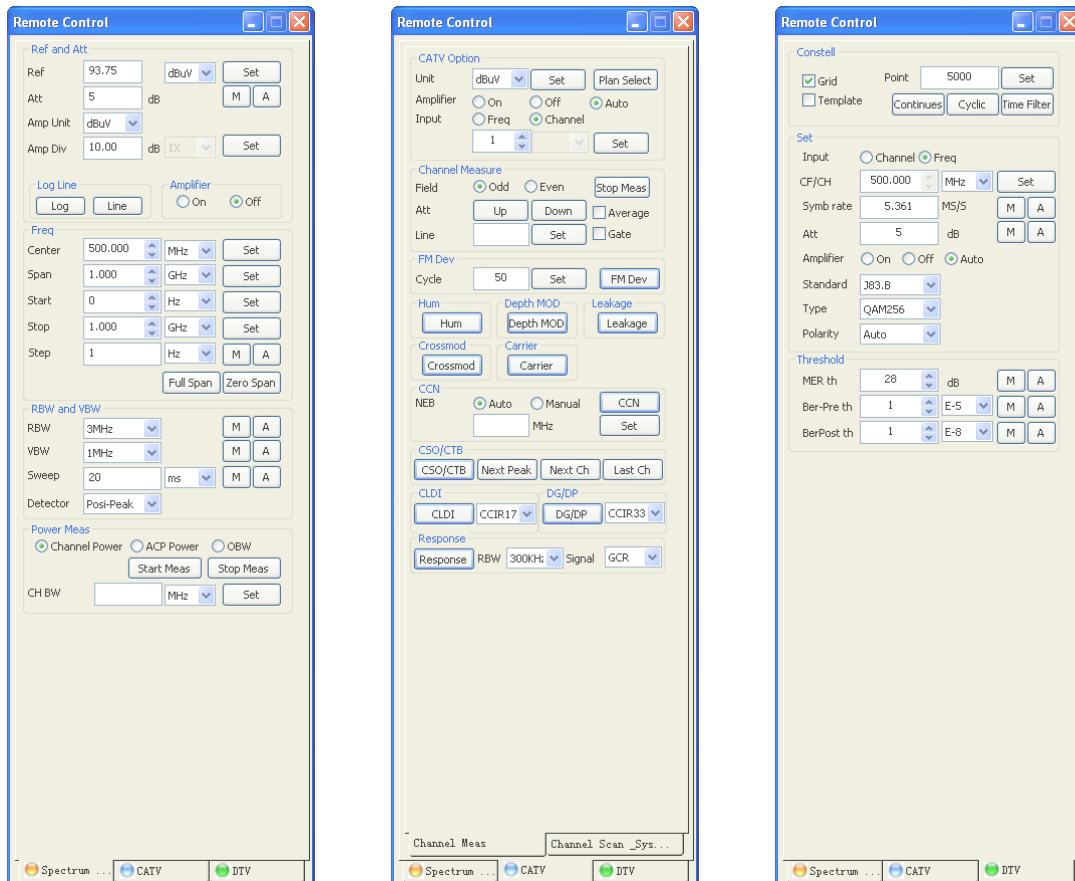
- View measurement data and setup information.
- View active channel test plan, channel and IP Address.
- Select the remote control measurement mode.
- Define measurement limits
- Enable MIN & MAX traces.
- Save a snapshot file or record a video file of the current measurement data that is displayed in the Live Display Window. The snapshot and video files includes the time/date stamped measurement data and the ability to add markers to analyze individual points of interest.
- Enable marker(s) by double-clicking the marker number and then highlight and drag the marker to a point of interest.
- Enable the Marker  $\Delta$  Measurement.
- Enable the Marker Table Window and transfer the marker data to a spreadsheet.

For Additional Help Contact  
Trilithic Applications Engineering  
1-800-344-2412 or 317-895-3600  
[support@trilithic.com](mailto:support@trilithic.com) or  
[www.trilithic.com](http://www.trilithic.com)

Q-Lab Software Navigation  
P/N 0010275046 – Rev 9/08  
4 of 7

## Remote Control Window

The Remote Control Window is used to control the live 8821Q-R analyzer display when in the remote control mode as shown in the following figure;



**Spectrum Mode**

**CATV Mode**

**DTV Mode**

This window also allows you to control the following measurement modes;

- Spectrum Analyzer Measurement Mode
- CATV Measurement Mode
  - Channel Measurement Tab – Select the channel test plan and control the channel measurement tests and settings.
  - Channel System Scan – Activate auto tests and programmed tests.
- DTV Measurement Mode – View and control QAM analyzer with constellation, equalizer, and long term BER statistics tests.

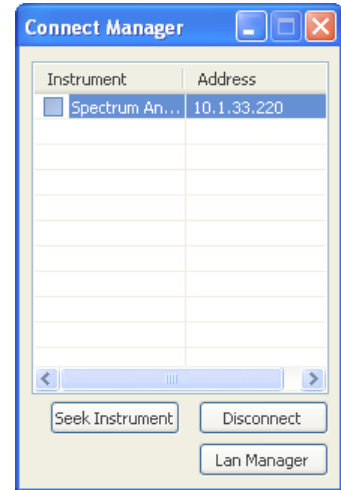
For Additional Help Contact  
 Trilithic Applications Engineering  
 1-800-344-2412 or 317-895-3600  
[support@trilithic.com](mailto:support@trilithic.com) or  
[www.trilithic.com](http://www.trilithic.com)

Q-Lab Software Navigation  
 P/N 0010275046 – Rev 9/08  
 5 of 7

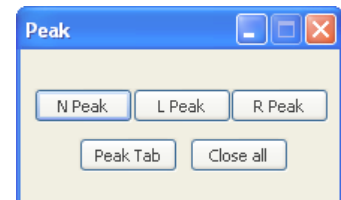
## Other Control Windows

The following windows provide added measurement functionality as described;

- **Connect Manager Window** – Use this window to add, delete, or make changes to the names or IP Addresses of any 8821Q-R. You can also remotely control the 8821Q-R by double-clicking the IP Address of the connected device.



- **Peak Marker Window** – Use this window while in the Spectrum Analyzer and CATV Measurement Modes to control the placement of the peak markers.

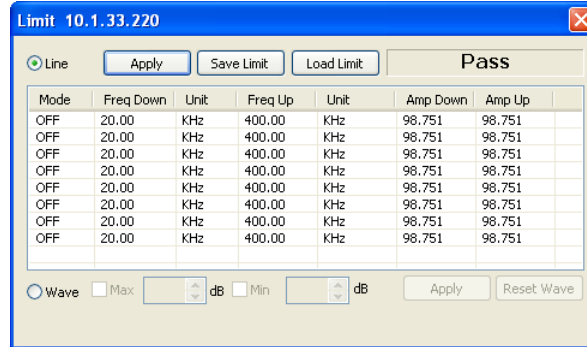


For Additional Help Contact  
Trilithic Applications Engineering  
1-800-344-2412 or 317-895-3600  
[support@trilithic.com](mailto:support@trilithic.com) or  
[www.trilithic.com](http://www.trilithic.com)

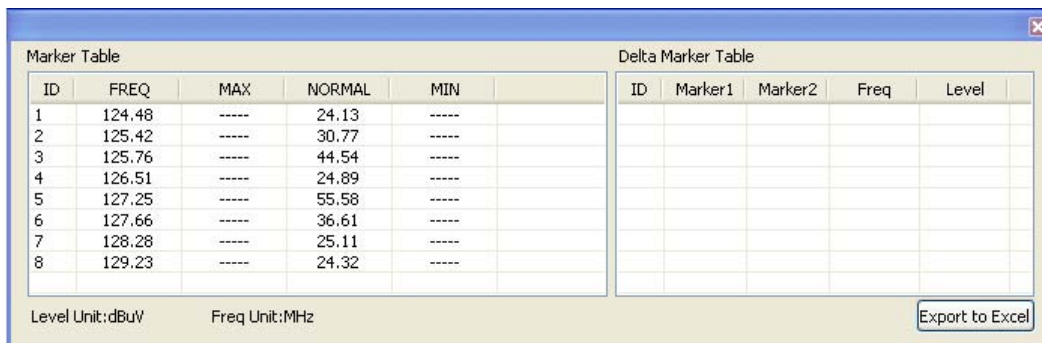
Q-Lab Software Navigation  
P/N 0010275046 – Rev 9/08  
6 of 7



- **Measurement Limits Window** – Use this window while in the Spectrum Analyzer Measurement Mode to open, save, or apply either line or wave measurement limits to the current Live Display.



- **Marker Table Window** – Use this window while in the Spectrum Analyzer Measurement Mode to analyzer the current markers and to transfer the marker data to a spreadsheet.



For Additional Help Contact  
 Trilithic Applications Engineering  
 1-800-344-2412 or 317-895-3600  
[support@trilithic.com](mailto:support@trilithic.com) or  
[www.trilithic.com](http://www.trilithic.com)

Q-Lab Software Navigation  
 P/N 0010275046 – Rev 9/08  
 7 of 7